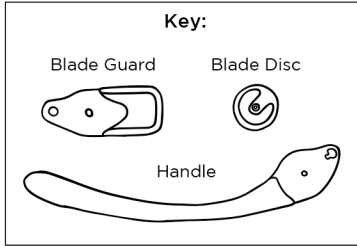




Hello fellow baker! Thank you for purchasing a Goose Lame. I know you're excited to get started, but please take a moment to slowly work through the steps below and learn how to install the blade safely into your Goose Lame. It may seem complicated, but once you've done it a few times, it will quickly become second nature. Let us remind you that razor blades are unforgivably sharp and you must be very cautious when handling them. If you would like to see a video of the blade installation process, please go to [wiremonkey.com](http://wiremonkey.com) FAQ section (The QR code will take you there.)

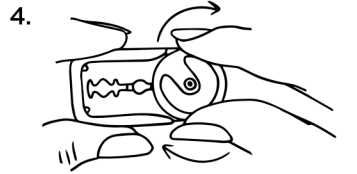
SCAN ME!



1. Turn blade disc counter-clockwise to remove it. The razor blade is wrapped in paper with your Goose lame. Remove it from the wrapper.

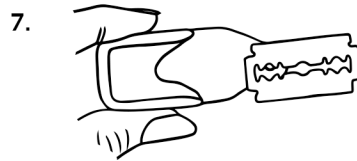
2. Blade pin  
Carefully place middle hole of the blade onto the handle's blade pin.

3. Hold the blade with your thumb and slide it into the blade guard.



5. Now you're ready to score! Always store the Goose Lame in the blade guard. There are magnets on the back so you can stick the lame to your fridge or any metal surface.

6. To remove the blade, place the Goose back into the blade guard, remove blade disc by turning counter-clockwise.



Keep your Goose Lame well oiled. This will prevent the wood from drying out or warping if it comes into contact with moisture. Use a food safe oil that will not go rancid over time. We highly recommend Wire Monkey brand fractionated coconut oil. You can remove dried flour residue with a stiff bristle brush.

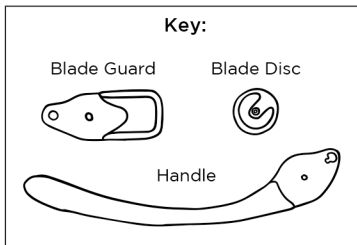
**CAUTION!**  
RAZOR BLADES ARE VERY SHARP AND CAN INJURE YOU!

Always keep fingers and body away from the sharp edge of the blade. Keep out of children's reach. Dispose of blades properly. Wire Monkey will not be held responsible for injury.



Hello fellow baker! Thank you for purchasing a Goose Lame. I know you're excited to get started, but please take a moment to slowly work through the steps below and learn how to install the blade safely into your Goose Lame. It may seem complicated, but once you've done it a few times, it will quickly become second nature. Let us remind you that razor blades are unforgivably sharp and you must be very cautious when handling them. If you would like to see a video of the blade installation process, please go to [wiremonkey.com](http://wiremonkey.com) FAQ section (The QR code will take you there.)

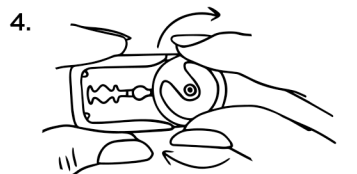
SCAN ME!



1. Turn blade disc counter-clockwise to remove it. The razor blade is wrapped in paper with your Goose lame. Remove it from the wrapper.

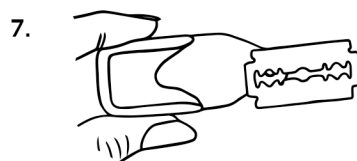
2. Blade pin  
Carefully place middle hole of the blade onto the handle's blade pin.

3. Hold the blade with your thumb and slide it into the blade guard.



5. Now you're ready to score! Always store the Goose Lame in the blade guard. There are magnets on the back so you can stick the lame to your fridge or any metal surface.

6. To remove the blade, place the Goose back into the blade guard, remove blade disc by turning counter-clockwise.



Keep your Goose Lame well oiled. This will prevent the wood from drying out or warping if it comes into contact with moisture. Use a food safe oil that will not go rancid over time. We highly recommend Wire Monkey brand fractionated coconut oil. You can remove dried flour residue with a stiff bristle brush.

**CAUTION!**  
RAZOR BLADES ARE VERY SHARP AND CAN INJURE YOU!

Always keep fingers and body away from the sharp edge of the blade. Keep out of children's reach. Dispose of blades properly. Wire Monkey will not be held responsible for injury.