



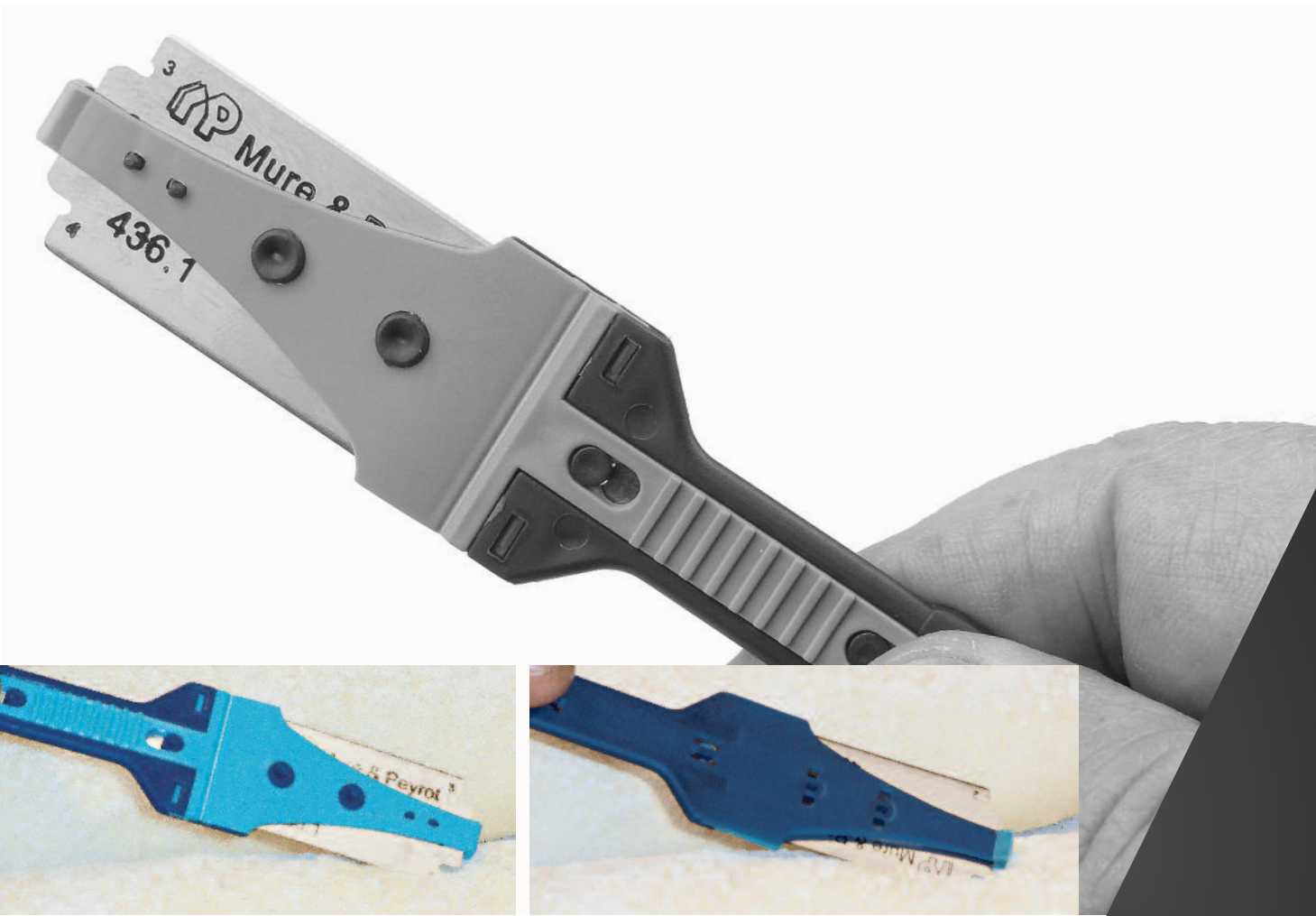
## BORDELAISE

### BLADE HOLDER FOR SCORING UNDER THE CRUST

In food composite material.

Specially designed, its shape facilitates scoring straight and curved of all breads and baguettes.

- SAFETY**
- Side protection.
  - Protective cap..



FOR RIGHT AND LEFT  
HANDED USERS



LIGHT



ERGONOMIC



AVOIDS  
MSDs



ENHANCED SECURITY

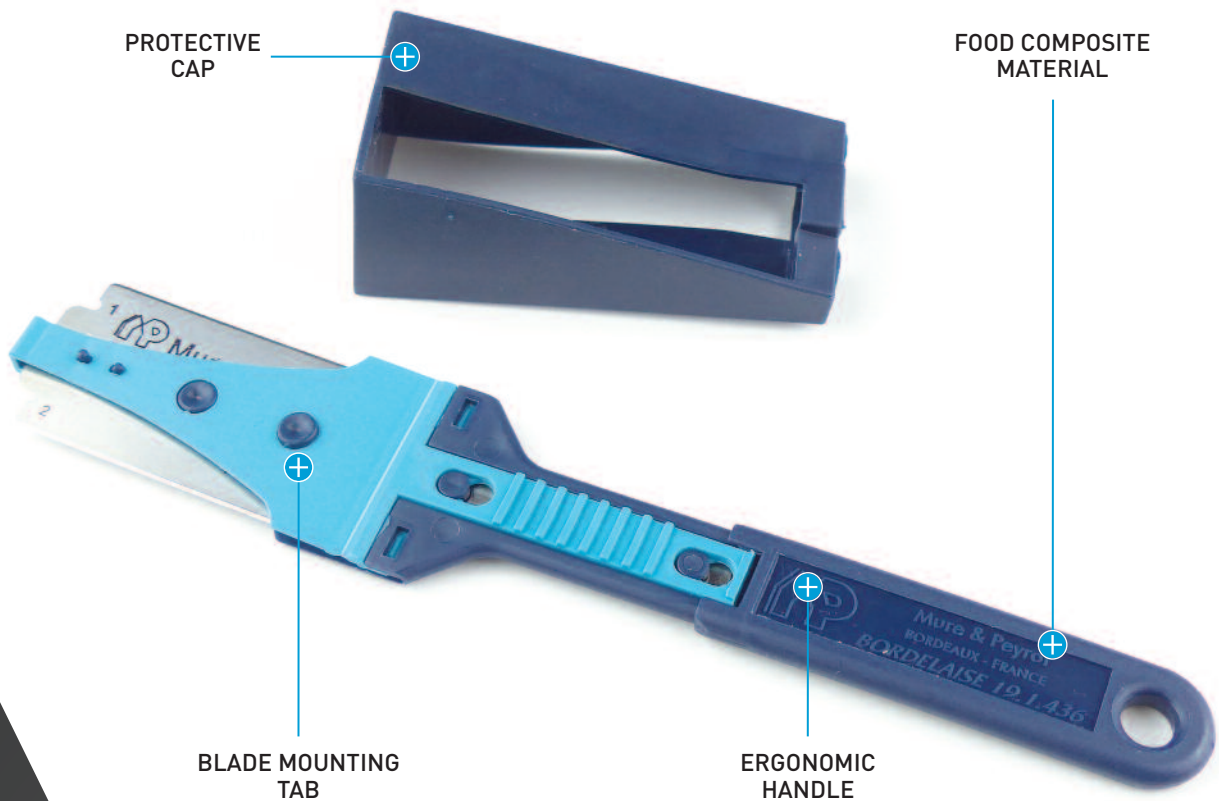


RESISTANT TO  
DETERGENTS

# TECHNICAL SHEET

## SPECIALLY DESIGNED FOR SCORING STRAIGHT AND CURVED

VERY GOOD HANDLING, GESTUAL COMFORT.



## ASSETS



DELIVERED WITH A FOOD STAINLESS STEEL BLADE REF 436.1 ALD



ERGONOMIC AND LIGHT FOR RIGHT & LEFT HANDED



HANDLE IN FOOD COMPOSITE MATERIAL

## FUNCTIONS



For scoring under the bread crust



For scoring under the crust of baguettes

### THE BLADE CAN BEND MANUALLY



### OTHER CHARACTERISTICS

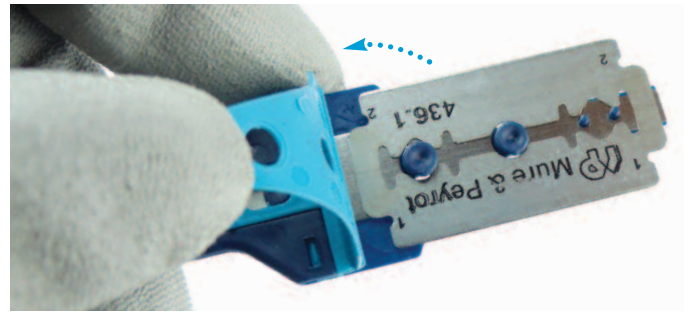
- Very light (11 g).
- When the blade is worn, it is rotated or changed.
- The blade is numbered at the 4 corners.
- Great ease of work.
- Resistant to acetone and detergents.
- During scoring, the blade is fixed to avoid any loss (compliance with regulations).
- Ideal for all bakers, clerks and apprentices.

## BLADE CHANGE

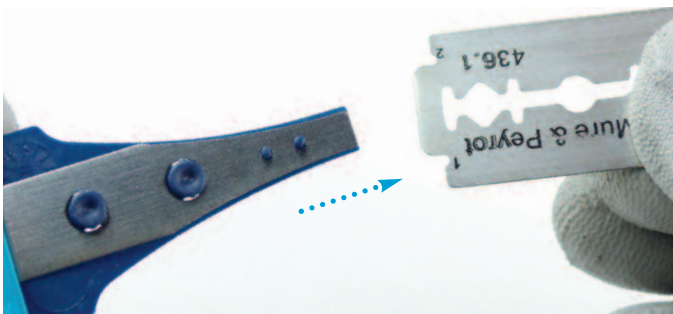
01/Remove the end of the blade protection cover.



02/Lift the cover to release the blade.

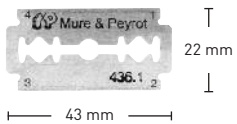


03/Gently remove the blade from the front. Place a new blade by positioning it correctly on the positioning pins. Lower the hood and lock it including the tip of the blade.



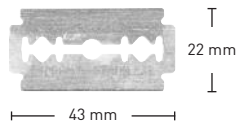
## BLADES

### DELIVERED WITH



REF 436.1 ALD Thk 0,1 mm  
Food stainless steel blade +13 % Cr.

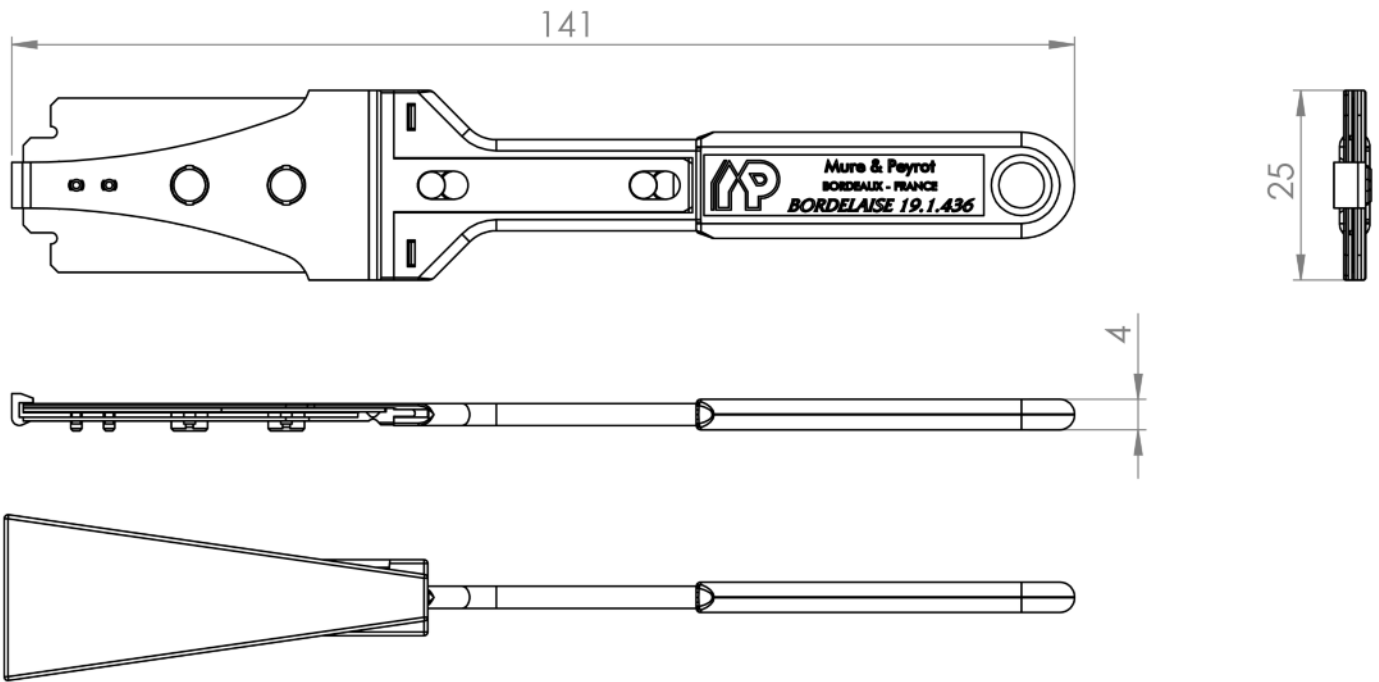
### OTHER COMPATIBLE BLADES



REF 536.1 ALD Thk 0,1 mm  
Food stainless steel blade +13 % Cr.

Blade Reference	Description	Type	Dimensions (in mm) Length • Width • Thickness	Sharpening Angle	Hardness
436.1 ALD	Razor-type blade numbered in all 4 corners	Food stainless steel blade +13 % Cr.	43 x 22 x 0,1	20°	57 Hrc
536.1 ALD	Razor-type blade	Food stainless steel blade +13 % Cr.	43 x 22 x 0,1	12°	58 Hrc

## TECHNICAL SHEET (in mm)



Packaging	Weight PKG	Dimensions (in mm) Length • Width • THK	Quantity PKG	Units	Accessories	Material	Color
IN BOX	11 g	141 x 25 x 4	10	5 units	Handle	Food grade polypropylene (PP)	Dark blue
					Hood	Food grade polypropylene (PP)	Light blue
					Metal insert	Food stainless steel blade +13 % Cr	Metal grey
					Protective cap	Food grade polypropylene (PP)	Dark blue
					Blade 436.1 ALD	Food stainless steel blade +13 % Cr	Metal grey

Food approval awarded by LNE.

**MP**  
MURE & PEYROT

MURE & PEYROT  
25, rue Roger Touton • BP 50120  
Parc d'Activités Bordeaux Nord  
33041 BORDEAUX CEDEX - FRANCE

Tel.: +33 (0)556 693 200 / Fax: +33 (0)556 693 202 / E-mail: mail@mure-peyrot.com

FOR MORE INFORMATION  
[MURE-PEYROT.COM](http://MURE-PEYROT.COM)